

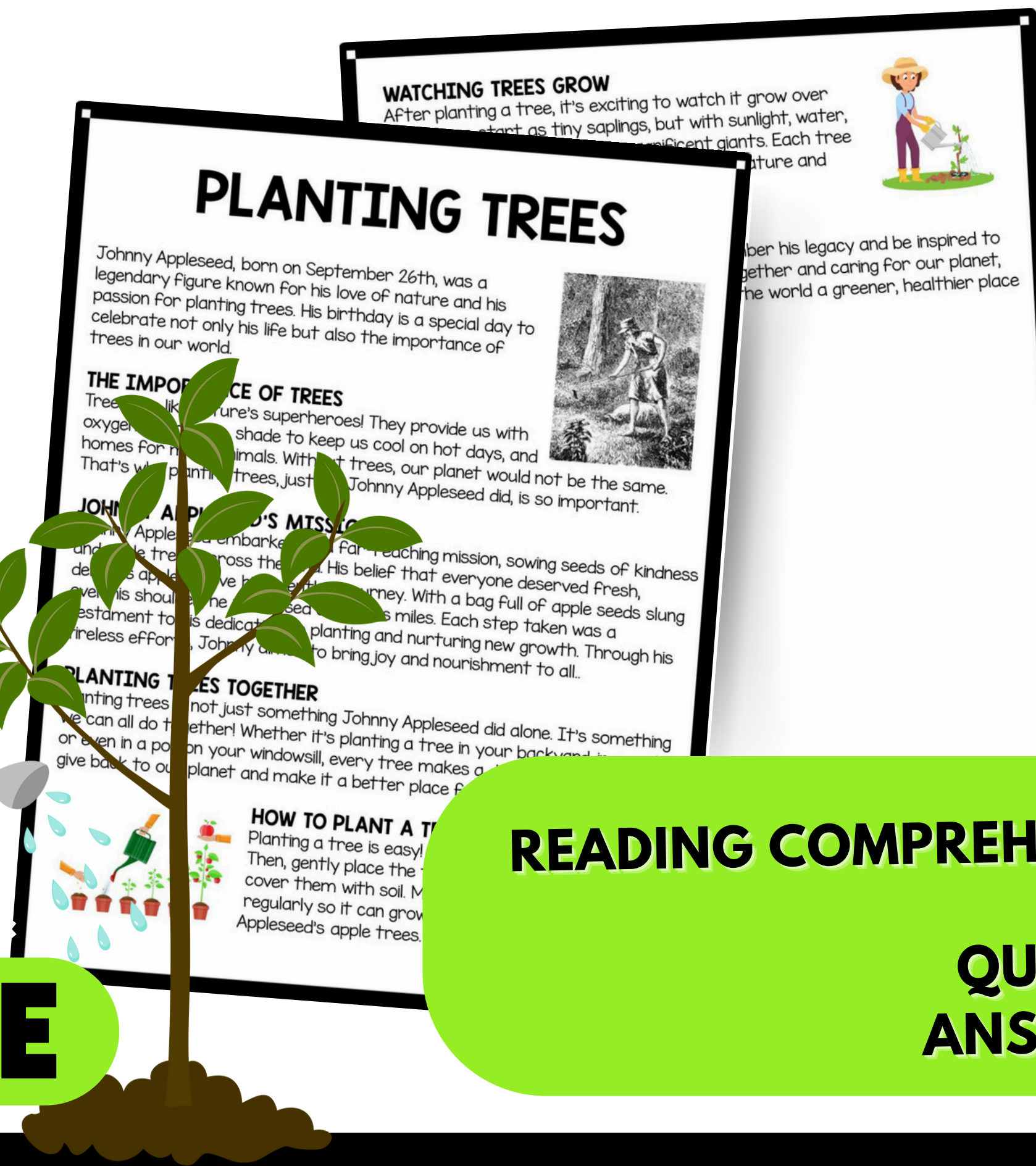
Johnny Appleseed

PLANTING TREES

READING COMPREHENSION



**NO-PREP &
EDITABLE**



**READING COMPREHENSION
MCQ'S
QUESTIONS
ANSWER KEY**

READING PASSAGES WITH TEXT DEPENDENT QUESTIONS

Ready to Print &
Editable



PLANTING TREES

Johnny Appleseed, born on September 26th, was a legendary figure known for his love of nature and his passion for planting trees. His birthday is a special day to celebrate not only his life but also the importance of trees in our world.



THE IMPORTANCE OF TREES

Trees are like nature's superheroes! They provide us with oxygen to breathe, shade to keep us cool on hot days, and homes for many animals. Without trees, our planet would not be the same. That's why planting trees, just like Johnny Appleseed did, is so important.

JOHNNY APPLESEED'S MISSION

Johnny Appleseed embarked on a far-reaching mission, sowing seeds of kindness and apple trees across the land. His belief that everyone deserved fresh, delicious apples drove his relentless journey. With a bag full of apple seeds slung over his shoulder, he traversed countless miles. Each step taken was a testament to his dedication to planting and nurturing new growth. Through his tireless efforts, Johnny aimed to bring joy and nourishment to all.

PLANTING TREES TOGETHER

Planting trees is not just something Johnny Appleseed did alone. It's something we can all do together! Whether it's planting a tree in your backyard, in a park, or even in a pot on your windowsill, every tree makes a difference. It's a way to give back to our planet and make it a better place for everyone.



HOW TO PLANT A TREE?

Planting a tree is easy! First, dig a hole in the ground. Then, gently place the tree's roots into the hole and cover them with soil. Make sure to water the tree regularly so it can grow big and strong, just like Johnny Appleseed's apple trees.

WATCHING TREES GROW

After planting a tree, it's exciting to watch it grow over time. Trees start as tiny saplings, but with sunlight, water, and care, they can grow into magnificent giants. Each tree is a living testament to our connection with nature and our responsibility to protect it.



CONCLUSION

On Johnny Appleseed's birthday, let's remember his legacy and be inspired to plant trees wherever we can. By working together and caring for our planet, we can honor Johnny's memory and make the world a greener, healthier place for generations to come. Happy planting!

READING COMPREHENSION

COLORED & B/W VERSIONS INCLUDED

Name_____

Date_____

PLANTING TREES

DIRECTIONS CHOOSE THE CORRECT ANSWER.

1. What is the special occasion celebrated on September 26th?

- a) Earth Day
- b) Arbor Day
- c) Johnny Appleseed's birthday
- d) International Tree Planting Day

2. What was Johnny Appleseed known for?

- a) Planting flowers
- b) Planting trees
- c) Building houses
- d) Writing books

3. Why are trees important?

- a) They provide shade and homes for animals
- b) They make the air smell nice
- c) They are fun to climb
- d) All of the above

4. What did Johnny Appleseed carry with him while traveling?

- a) A bag of apple seeds
- b) A bag of candy
- c) A bag of toys
- d) A bag of books

5. What did Johnny Appleseed believe everyone deserved to have?

- a) Fresh water
- b) Delicious apples
- c) Colorful flowers
- d) Warm blankets

SHORT ANSWER QUESTIONS

1. What is the importance of trees?
2. What did Johnny Appleseed carry?
3. How does the passage describe trees?
4. What is exciting about watching trees grow?
5. What is the main message of the passage?

6. What is one way to plant a tree?

- a) Throw seeds randomly
- b) Dig a hole and gently place the roots in
- c) Step on the seeds
- d) Leave the seeds on the ground

7. What is exciting about watching trees grow?

- a) They stay the same size forever
- b) They shrink
- c) They grow into magnificent giants
- d) They turn into animals

8. What does the passage encourage Johnny Appleseed's birthday?

- a) Eat apples
- b) Watch movies
- c) Plant trees
- d) Play video games

9. How does the passage describe trees?

- a) As superheroes
- b) As villains
- c) As monsters
- d) As robots

10. What is the main message of the passage?

- a) Trees are not important
- b) Planting trees is difficult
- c) Trees are like superheroes and planting them is important
- d) Trees are like superheroes and planting them is important

ANSWER KEY

MCQS

1. c) Johnny Appleseed's birthday
2. b) Planting trees
3. a) They provide shade and homes for animals
4. a) A bag of apple seeds
5. b) Delicious apples
6. b) Dig a hole and gently place the roots in
7. c) They grow into magnificent giants
8. c) Plant trees
9. a) As superheroes
10. c) Trees are like superheroes and planting them is important

SHORT-ANSWER QUESTION

1. Trees provide oxygen, shade, and homes for animals.
2. A bag of apple seeds.
3. Dig a hole and gently place the roots in.
4. They grow into magnificent giants.
5. Trees are like superheroes, and planting them is important.

ANSWER KEY
INCLUDED

10 - MCQ'S & 5
QUESTIONS