

ROCKEFELLER

Christmas Tree Lighting

READING COMPREHENSION



ROCKEFELLER CHRISTMAS TREE LIGHTING

Every year in New York City, there is a magical event called the Rockefeller Christmas Tree Lighting. Let's explore this exciting tradition and learn what makes it so special!

A GRAND TRADITION BEGINS

The tradition of lighting a Christmas tree at Rockefeller Center began in 1931. It started as a small ceremony to bring joy to the people during the Great Depression. Over the years, it has grown into a grand event that marks the beginning of the holiday season.

FINDING THE PERFECT TREE

Each year, a team of experts searches for the perfect tree to be the centerpiece of the Rockefeller Christmas celebration. The chosen tree is usually a Norway spruce, tall and full, with branches that can hold thousands of lights and decorations.

BRINGING THE TREE TO THE CITY

Once the perfect tree is found, it is carefully cut down and transported to Rockefeller Center in the heart of Manhattan. This operation requires special trucks and equipment to ensure the massive tree is moved safely. Navigating through the streets of New York City is a challenging task. The tree's arrival is the beginning of a beloved holiday tradition. It brings joy to countless visitors.

DECORATING THE TREE

After the tree arrives at Rockefeller Center, it is placed and decorated with thousands of lights and ornaments. The decorations include colorful lights, stars, and even a big star on top. It takes a lot of work to make the tree look its best.

THE BIG EVENT

Finally, the big day arrives - the Rockefeller Christmas Tree Lighting. Thousands of people gather at Rockefeller Center to watch the tree be lit up for the first time. Musicians, singers, and dancers perform on television for everyone to see.



The tree is a symbol of hope, joy, and peace. It brings the world together to celebrate the holiday season. When the tree is lit, it shines brightly every night, spreading holiday cheer to everyone.

The Rockefeller Christmas Tree Lighting is a beloved tradition that captures the spirit of the season. It reminds us to come together, to share joy with others. Whether you watch it on television or in person, the Rockefeller Christmas tree is sure to bring you joy.

ROCKEFELLER CHRISTMAS TREE LIGHTING

CHOOSE THE CORRECT ANSWER.

1. What is the tradition of lighting a Christmas tree?

2. What type of tree is usually chosen for the Rockefeller Christmas tree?

3. How is the chosen tree transported to Rockefeller Center?

4. What is used to decorate the tree?

5. What is the big event on the night the tree is lit?

NO-PREP & EDITABLE

**READING COMPREHENSION
MCQ'S
QUESTIONS
ANSWER KEY**

READING PASSAGES WITH TEXT DEPENDENT QUESTIONS

ROCKEFELLER CHRISTMAS TREE LIGHTING

Every year in New York City, there is a magical event called the Rockefeller Christmas Tree Lighting. Let's explore this exciting tradition and learn what makes it so special!

A GRAND TRADITION BEGINS

The tradition of lighting a Christmas tree at Rockefeller Center began in 1931. It started as a small ceremony to bring joy to the people during the Great Depression. Over the years, it has grown into a grand event that marks the beginning of the holiday season.

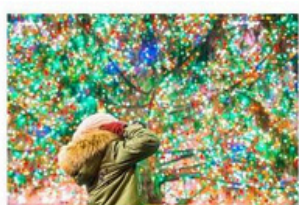


FINDING THE PERFECT TREE

Each year, a team of experts searches for the perfect tree to be the centerpiece of the Rockefeller Christmas celebration. The chosen tree is usually a Norway spruce, tall and full, with branches that can hold thousands of lights and decorations.

BRINGING THE TREE TO THE CITY

Once the perfect tree is found, it is carefully cut down and transported to Rockefeller Center in the heart of Manhattan. This operation requires special trucks and equipment to ensure the massive tree is moved safely. Navigating through the streets of New York City is a challenging task. The tree's arrival marks the beginning of a beloved holiday tradition. It becomes a centerpiece of celebration, bringing joy to countless visitors.



DECORATING THE TREE

After the tree arrives at Rockefeller Center, it is lifted into place and decorated with thousands of lights and ornaments. The decorations include colorful balls, sparkling stars, and even a big star on top of the tree. It takes weeks of hard work to make the tree look its best.

Ready to Print &
Editable



THE BIG EVENT

Finally, the big day arrives - the Rockefeller Christmas Tree Lighting ceremony. Thousands of people gather at Rockefeller Center to watch as the tree is lit up for the first time. There are performances by famous singers and dancers, and the whole event is broadcast on television for millions of people to see.



SPREADING HOLIDAY CHEER

The lighting of the Rockefeller Christmas tree is a symbol of hope, joy, and togetherness. It brings people from all over the world together to celebrate the magic of the holiday season. After the tree is lit, it shines brightly every night until the end of the holiday season, spreading holiday cheer to everyone who sees it.

CONCLUSION

The Rockefeller Christmas Tree Lighting is a beloved tradition that captures the spirit of the holiday season. It reminds us to come together, to celebrate, and to spread joy and kindness to others. Whether you watch it on TV or see it in person, the lighting of the Rockefeller Christmas tree is sure to fill your heart with warmth and wonder.

READING COMPREHENSION

COLORED & B/W VERSIONS INCLUDED

Name_____

Date_____

ROCKEFELLER CHRISTMAS TREE LIGHTING

DIRECTIONS CHOOSE THE CORRECT ANSWER.

1. When did the tradition of lighting a Christmas tree at Rockefeller Center begin?

- a) 1930
- b) 1925
- c) 1931
- d) 1940

2. What type of tree is usually chosen to be the Rockefeller Christmas tree?

- a) Pine
- b) Oak
- c) Norway spruce
- d) Maple

3. How is the chosen tree transported to Rockefeller Center?

- a) By boat
- b) By helicopter
- c) By special trucks
- d) By train

4. What decorations are used to adorn the Rockefeller Christmas tree?

- a) Sea shells
- b) Leaves
- c) Lights and ornaments
- d) Feathers

5. How long does it take to decorate Christmas tree?

- a) Days
- b) Weeks
- c) Hours
- d) Months

6. What happens during the Rockefeller Lighting ceremony?

- a) A parade
- b) Performances by famous artists
- c) A cooking competition
- d) A fashion show

7. What does the Rockefeller Christmas symbolize?

- a) Sadness
- b) Hope, joy, and togetherness
- c) Fear
- d) Loneliness

8. How long does the Rockefeller Christmas brightly?

- a) One week
- b) Until New Year's Day
- c) Until Valentine's Day
- d) Until Easter

9. What message does the Rockefeller Christmas convey?

- a) Kindness and love
- b) Joy and celebration
- c) Sadness and despair
- d) None of the above

10. How do people watch the Rockefeller Christmas ceremony?

- a) Only at Rockefeller Center
- b) Only on television
- c) Both at Rockefeller Center and on television
- d) Only on media platforms

SHORT ANSWER QUESTIONS

1. When did the tradition of lighting a Christmas tree begin?

2. What type of tree is usually chosen to be the Rockefeller Christmas tree?

3. How is the chosen tree transported to Rockefeller Center?

4. What decorations are used to adorn the Rockefeller Christmas tree?

5. What does the Rockefeller Christmas symbolize?

ANSWER KEY

MCQS

- 1. c) 1931
- 2. c) Norway spruce
- 3. c) By special trucks
- 4. c) Lights and ornaments
- 5. b) Weeks
- 6. b) Performances by famous artists
- 7. b) Hope, joy, and togetherness
- 8. b) Until New Year's Day
- 9. b) Joy and celebration
- 10. c) Both in person at Rockefeller Center and on television

SHORT-ANSWER QUESTION

- 1. The tradition began in 1931.
- 2. The chosen tree is usually a Norway spruce.
- 3. The chosen tree is transported to Rockefeller Center by special trucks.
- 4. The Rockefeller Christmas tree is adorned with lights and ornaments.
- 5. The Rockefeller Christmas tree lighting symbolizes hope, joy, and togetherness.

ANSWER KEY
INCLUDED

10 - MCQ'S & 5
QUESTIONS