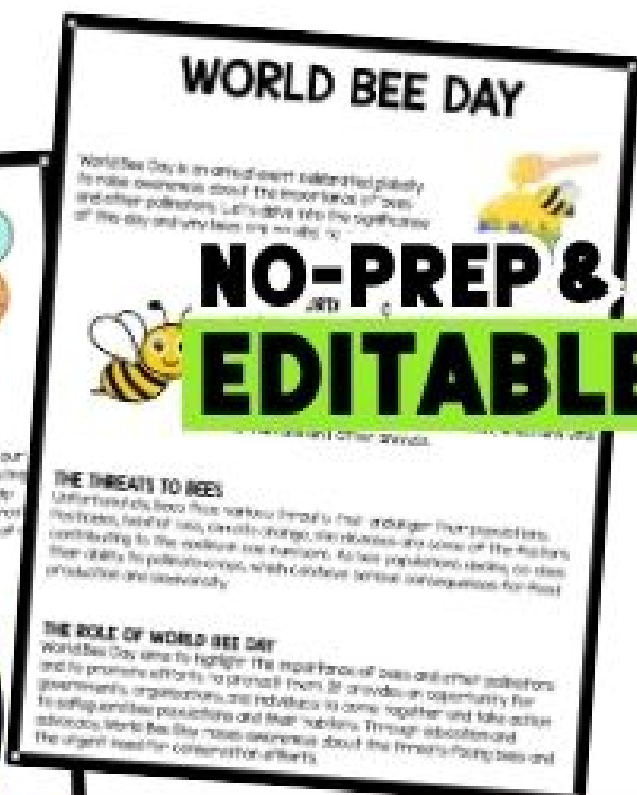
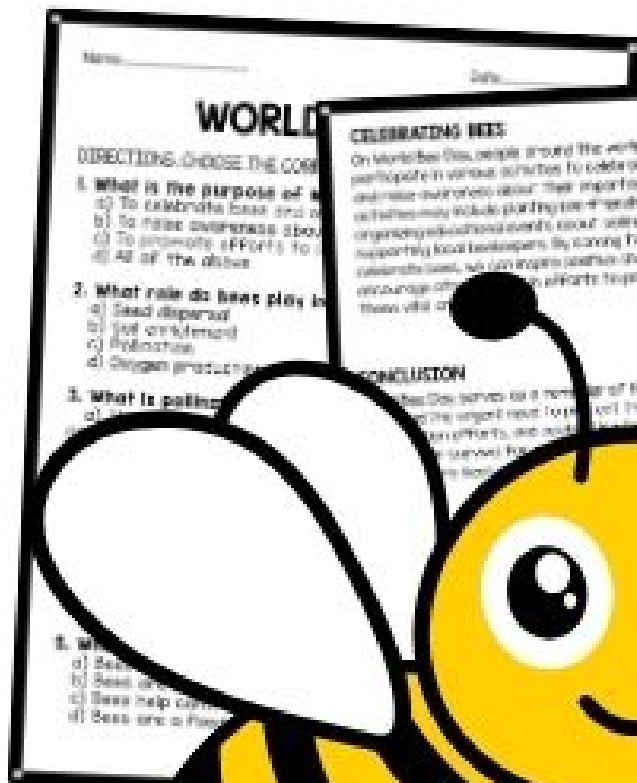


# WORLD BEE DAY

## Reading Comprehension



**NO-PREP & EDITABLE**

**READING COMPREHENSION  
MCQ'S  
QUESTIONS  
ANSWER KEY**

## READING PASSAGES WITH TEXT DEPENDENT QUESTIONS

Ready to Print &  
Editable



### WORLD BEE DAY

World Bee Day is an annual event celebrated globally to raise awareness about the importance of bees and other pollinators. Let's delve into the significance of this day and why bees are so vital to our world.



#### THE IMPORTANCE OF BEES

Bees play a crucial role in our ecosystem by pollinating flowers, fruits, and vegetables. Pollination is the process of transferring pollen from the male parts of a flower to the female parts, which is essential for plants to reproduce. Without bees, many plants would not be able to produce fruits and seeds, which are vital for humans and other animals.

#### THE THREATS TO BEES

Unfortunately, bees face various threats that endanger their populations. Pesticides, habitat loss, climate change, and diseases are some of the factors contributing to the decline in bee numbers. As bee populations decline, so does their ability to pollinate crops, which can have serious consequences for food production and biodiversity.

#### THE ROLE OF WORLD BEE DAY

World Bee Day aims to highlight the importance of bees and other pollinators and to promote efforts to protect them. It provides an opportunity for governments, organizations, and individuals to come together and take action to safeguard bee populations and their habitats. Through education and advocacy, World Bee Day raises awareness about the threats facing bees and the urgent need for conservation efforts.

#### CELEBRATING BEES

On World Bee Day, people around the world participate in various activities to celebrate bees and raise awareness about their importance. These activities may include planting bee-friendly gardens, organizing educational events about pollinators, and supporting local beekeepers. By coming together to celebrate bees, we can inspire positive change and encourage others to join in efforts to protect these vital creatures.



#### CONCLUSION

World Bee Day serves as a reminder of the critical role that bees play in our world and the urgent need to protect them. By raising awareness, promoting conservation efforts, and celebrating the importance of bees, we can help ensure their survival for generations to come. Let's work together to create a world where bees can thrive and continue to contribute to the health of our planet.

READING COMPREHENSION

COLORED & B/W  
VERSIONS INCLUDED

Name: \_\_\_\_\_

Date: \_\_\_\_\_

## WORLD BEE DAY

DIRECTIONS: CHOOSE THE CORRECT ANSWER.

1. What is the purpose of World Bee Day?
  - a) To celebrate bees and other pollinators
  - b) To raise awareness about the importance of bees
  - c) To promote efforts to protect bees and their habitats
  - d) All of the above
2. What role do bees play in the ecosystem?
  - a) Seed dispersal
  - b) Soil enrichment
  - c) Pollination
  - d) Oxygen production
3. What is pollination?
  - a) The process of transferring seeds from one plant to another
  - b) The process of transferring pollen from the male parts of a flower to the female parts
  - c) The process of converting nectar into honey
  - d) The process of protecting flowers from predators
4. What are some threats to bee populations?
  - a) Climate change
  - b) Habitat loss
  - c) Pesticides
  - d) All of the above
5. What is the significance of bees for food production?
  - a) Bees are important for the production of oxygen
  - b) Bees are essential for pollinating crops
  - c) Bees help control pest populations
  - d) Bees are a food source for humans

### SHORT ANSWER QUESTIONS

1. What is the purpose of World Bee Day?
2. Why are bees important in the ecosystem?
3. What are some threats to bee populations?
4. How does World Bee Day contribute to conservation?
5. What activities might people do on World Bee Day?

### 5. How does World Bee Day contribute to conservation?

- a) By organizing educational events
- b) By promoting bee-friendly gardens
- c) By raising awareness about threats
- d) All of the above

### 2. What activities might people participate in on World Bee Day?

- a) Planting bee-friendly gardens
- b) Visiting local beekeepers
- c) Organizing educational events
- d) All of the above

### 4. What is the purpose of celebrating World Bee Day?

- a) To highlight the importance of bees
- b) To encourage people to do more for bees
- c) To promote the use of pesticides
- d) To decrease biodiversity

### 3. How do pesticides contribute to the decline of bee populations?

- a) By providing nutrition for bees
- b) By destroying bee habitats
- c) By killing bees directly
- d) By promoting bee reproduction

### 10. What is the main message of World Bee Day?

- a) Bees are not important for the ecosystem
- b) Bees are endangered species
- c) Bees do not affect the health of our planet
- d) Bees are essential to humans

## ANSWER KEY

MCQ

1. d) All of the above
2. c) Pollination
3. b) The process of transferring pollen from the male parts of a flower to the female parts
4. d) All of the above
5. b) Bees are essential for pollinating crops
6. d) All of the above
7. d) All of the above
8. a) To highlight the importance of bees
9. c) By killing bees directly
10. d) Bees are vital for the health of our planet

### SHORT-ANSWER QUESTIONS:

1. To raise awareness about the importance of bees and other pollinators, and to promote efforts to protect them
2. Beekeeping, planting bee-friendly flowers, visiting local beekeepers, and participating in educational events
3. Bees help transfer pollen, which is essential for plant reproduction
4. By organizing educational events, promoting bee-friendly gardening, and raising awareness about threats to bees
5. People might participate in activities such as planting bee-friendly gardens, visiting local beekeepers, and organizing educational events

ANSWER KEY  
INCLUDED

10 - MCQ'S & 5  
QUESTIONS

**READY TO PRINT**

**NO-PREP !**

**JUST PRINT AND GO!**



**EASY EDITING**

**EDITABLE**

**\* FONTS ARE EMBEDDED FOR CONVENIENCE**

